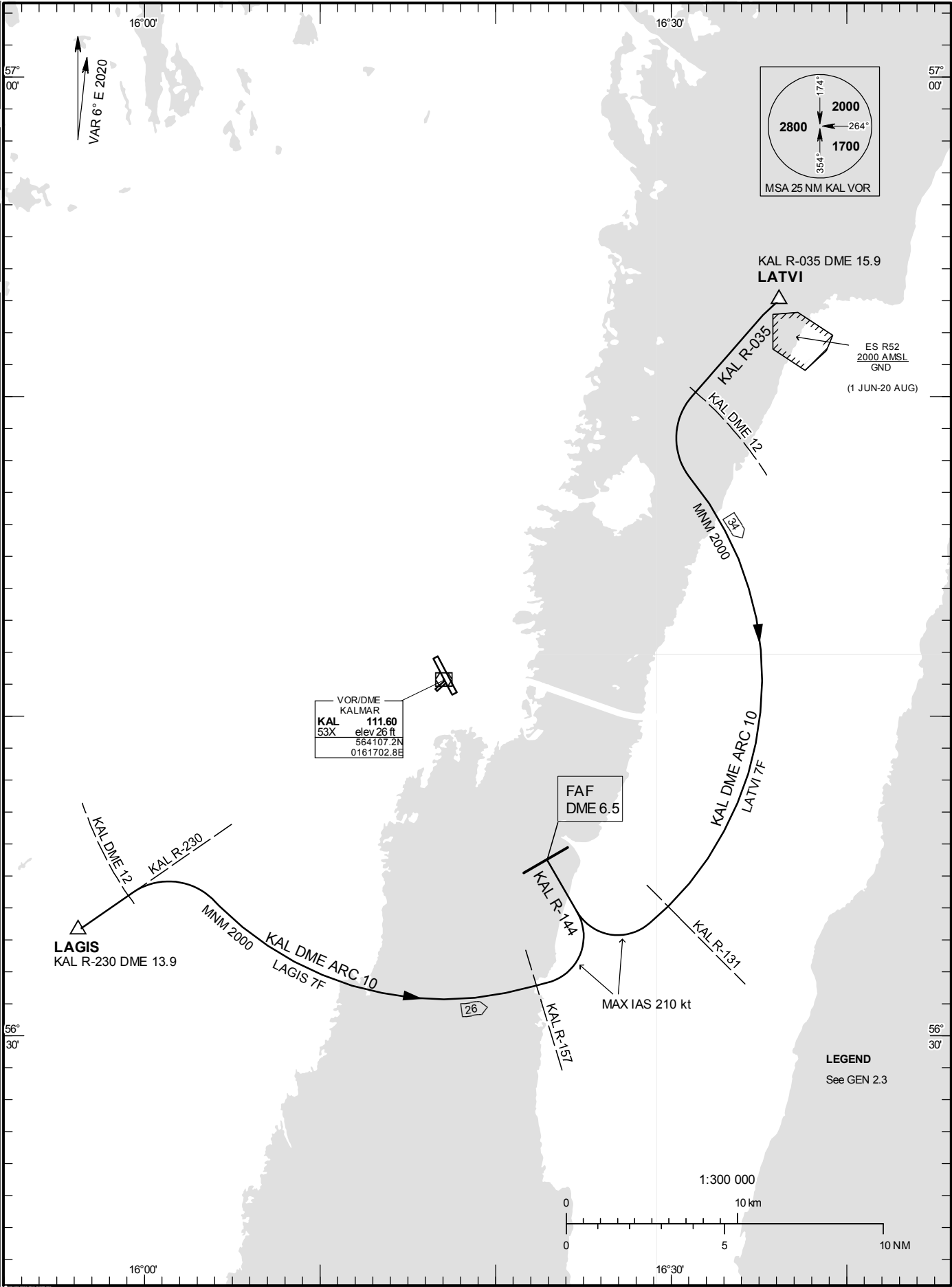


KALMAR
RWY 34

**STANDARD INSTRUMENT
ARRIVAL CHART (STAR) -
ICAO**

HGT and ALT in ft
BRG are MAG
TA 5000 ft AMSL

KALMAR TOWER 130.805



KALMAR

ARRIVAL (STAR) RWY 34

REMARK

Descent to a minimum altitude for an arrival route must not be initiated until an air traffic control clearance to this altitude or an approach clearance has been received.

LAGIS SEVEN FOXTROT ARRIVAL (LAGIS 7F)

At LAGIS intercept KAL R-230 and proceed to KAL DME 12.
Turn right and proceed on KAL DME ARC 10 to KAL R-157.
Turn left (MAX IAS 210 kt) to intercept KAL R-144 not below 2000 ft until FAF KAL DME 6.5.

LATVI SEVEN FOXTROT ARRIVAL (LATVI 7F)

At LATVI intercept KAL R-035 and proceed to KAL DME 12.
Turn left and proceed on KAL DME ARC 10 to KAL R-131.
Turn right (MAX IAS 210 kt) to intercept KAL R-144 not below 2000 ft until FAF KAL DME 6.5.